



*A shared vision for a high quality education for every child, in every school, every day.*

Alliance for Arts Learning Leadership  
ALAMEDA COUNTY OFFICE OF EDUCATION  
SHEILA JORDAN, SUPERINTENDENT  
313 WEST WINTON AVE. • HAYWARD, CA 94544-1136  
www.acoe.org  
www.artiseducation.org

## Introducing the Studio Thinking Framework in Alameda County

The Studio Thinking Framework has helped Alameda County teachers answer the question: Why are the arts essential to a high quality education for every child, in every school, every day? It describes eight Studio Habits of Mind that name, convey and assess the multi-layered, meta-cognitive learning that happens in the arts. Studying the arts means more than learning techniques with materials and tools—the arts require many skills and attitudes critical to success in all content areas and in life.

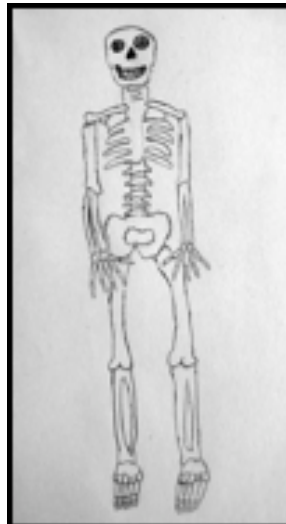
The Studio Thinking Framework was developed by researchers at Project Zero at the Harvard Graduate School of Education who studied what and how excellent visual art teachers teach and what students learn in their classes. This thinking frame describes both what is taught in high quality visual arts classes (eight studio habits of mind) and how teachers organize classes to nurture high quality arts learning (three studio structures).

### The Eight Studio Habits of Mind

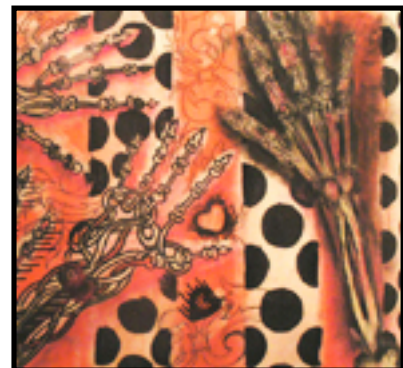
- Develop Craft
- Engage and Persist
- Envision
- Express
- Observe
- Reflect
- Stretch and Explore
- Understand Art World



**Observe**



**Develop Craft**



**Express**



*A shared vision for a high quality education  
for every child, in every school, every day.*

Alliance for Arts Learning Leadership  
ALAMEDA COUNTY OFFICE OF EDUCATION  
SHEILA JORDAN, SUPERINTENDENT  
313 WEST WINTON AVE. • HAYWARD, CA 94544-1136  
[www.acoe.org](http://www.acoe.org)  
[www.artiseducation.org](http://www.artiseducation.org)

## Introducing the Studio Thinking Framework in Alameda County

### The Three Studio Structures

- **Demonstration-Lecture:** Teachers deliver information quickly and visually, about processes and tasks that students immediately undertake in assignments.
- **Students-at-Work:** Students make artworks based on teachers' assignments, while teachers observe and consult with individuals or small groups.
- **Critique:** Teachers and students discuss and reflect on students' artwork, often while it is still in process.

**How do teachers in Alameda County use the Studio Thinking Framework?** The Studio Thinking Framework is being used in Alameda County by generalist teachers, arts specialists, and community arts providers at all levels. Originally developed for the visual arts, this framework has been adapted for music, drama, and dance in Alameda County.

Teachers use the Studio Thinking Framework because it helps them talk explicitly with students about what they intend them to understand. It also helps art teachers assess arts learning so that students can take next steps toward developing deeper understanding in the arts.

Both general classroom teachers and arts specialists in Alameda County are using the Studio Thinking Framework to focus their lessons on developing students' artistic minds and to connect learning in the arts to deepening understanding in other content areas.

Teaching the arts by using the Studio Thinking Framework means that arts projects are always more than engaging activities—they are opportunities to develop and demonstrate thinking and understanding!

